

Rotary Valve | GRM

For Granular Applications

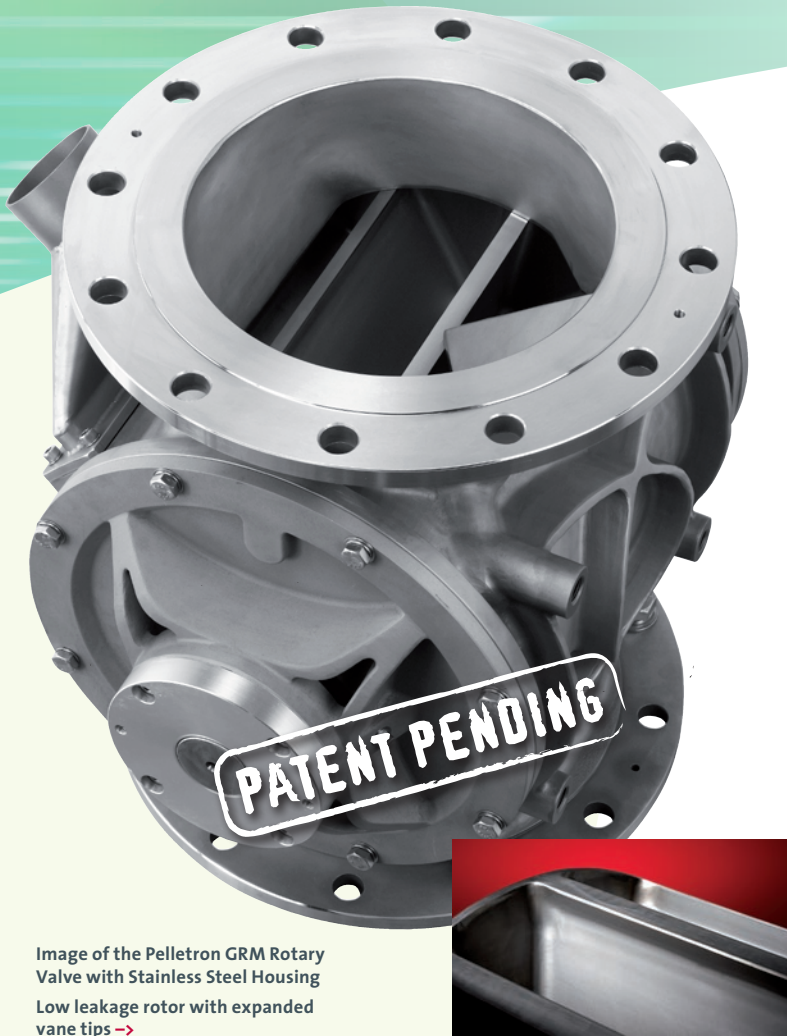


Image of the Pelletron GRM Rotary Valve with Stainless Steel Housing
Low leakage rotor with expanded vane tips →

Applications

- For use with granular products and pellets
- For metering
- For feeding pneumatic conveying systems
- Suitable for differential pressure up to 22 psi (1.5bar)

Design

- Sizes from 4" to 20" (100mm to 500mm)
- Flanges: ANSI 150#, DIN PN10, JIS 5k/10k
- Temperature Range: up to 480° F, 250° C
- Drive: various arrangements available
- Housing: stainless steel and AL casting
- Rotor: stainless steel
- Double lip shaft seal

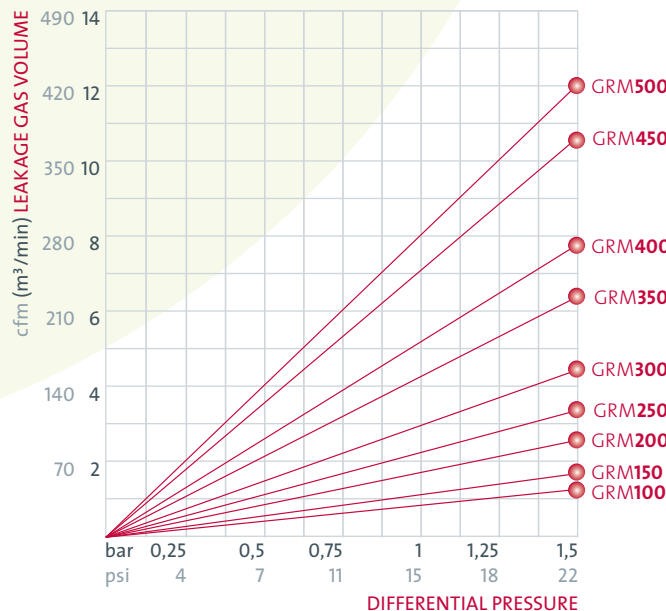
Features

- Anti shearing device for gentle product handling
- Low leakage rotor (patent pending) with expanded vane tips
- Integrated leakage air vent for improved filling efficiency
- Heavy duty housing and bearing support for minimized rotor tolerance
- Closed end rotor with 10 vanes

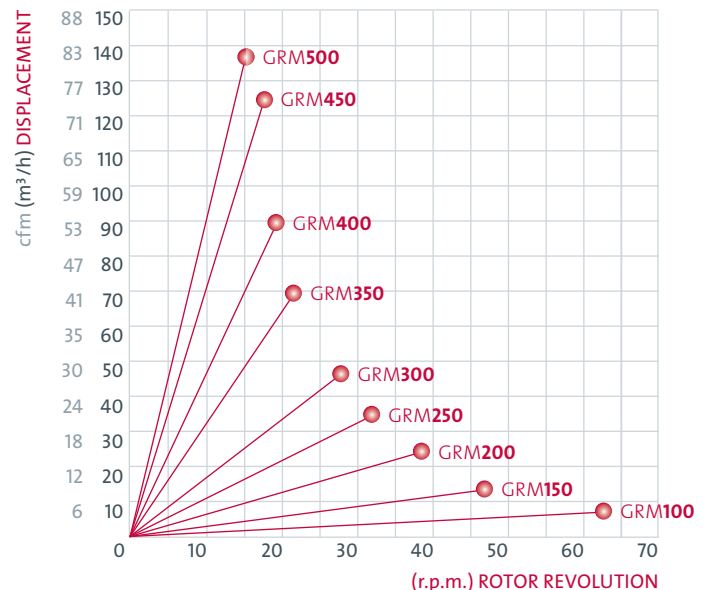
Options

- Quick clean design with extraction device
- Polished grades available
- Special rotor design for metering available
- Shaft seal purge kit
- Special material grades on request
- Wear protection
- Feed shoe, vent hopper and speed monitor

Leakage Gas Diagram

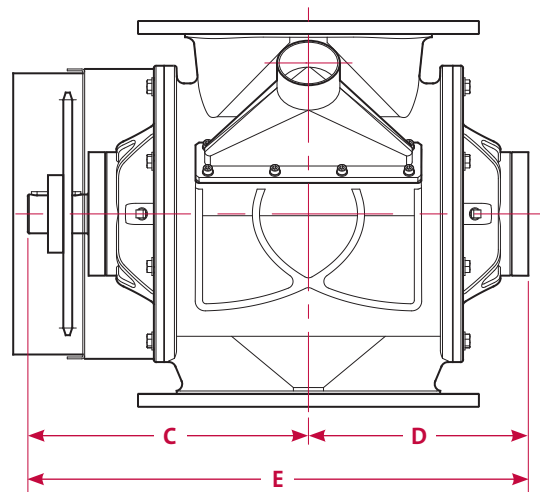
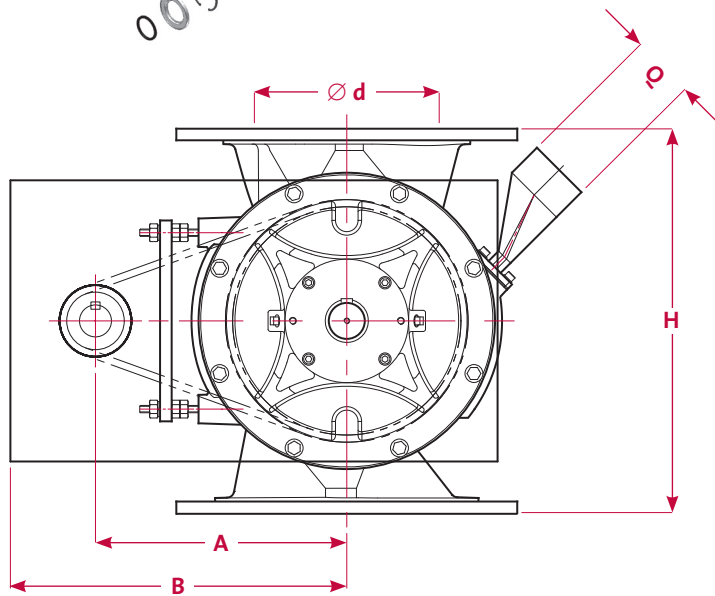
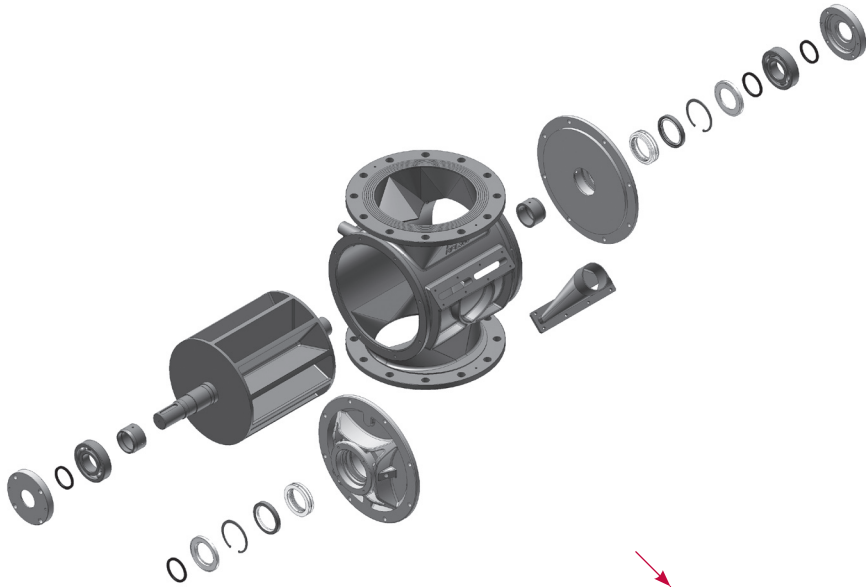


Volumetric Capacity



Testing conditions: 1.64ft/sec (0,5m/sec) tangential speed. Temperature 140°F (60°C)

GRM Rotary Valve Dimensions



Size	∅ d	A	B	C	D	E	H	Q
GRM 100	4"	9"	12 1/4"	9 5/16"	7 3/16"	17 7/16"	10 5/8"	1"
	110 mm	228 mm	310 mm	236 mm	182 mm	442 mm	270 mm	25 mm
GRM 150	6"	9 5/8"	13"	11 1/16"	8 3/8"	20 1/16"	13 3/4"	2"
	159 mm	244 mm	330 mm	280,5 mm	213 mm	511 mm	350 mm	50 mm
GRM 200	8"	12 1/8"	17"	12 3/8"	9 3/4"	23 1/16"	16 1/2"	2 1/2"
	210 mm	307 mm	432 mm	314 mm	247 mm	585 mm	420 mm	64 mm
GRM 250	10"	14 3/16"	18 1/16"	14 1/2"	11 3/16"	26"	19 11/16"	3"
	260 mm	360 mm	459 mm	368,5 mm	284,5 mm	661 mm	500 mm	75 mm
GRM 300	12"	15"	19"	15 11/16"	12 1/4"	28 11/16"	21 5/8"	4"
	310 mm	381 mm	403 mm	398,5 mm	311,5 mm	729 mm	550 mm	100 mm
GRM 350	14"	17 3/4"	21 13/16"	16 15/16"	13 11/16"	31 1/2"	27 9/16"	4"
	350 mm	447 mm	554 mm	430 mm	348 mm	800 mm	700 mm	100 mm
GRM 400	16"	19 1/8"	22 5/8"	18"	14 13/16"	33 5/8"	29 1/2"	5"
	400 mm	486 mm	576 mm	457,5 mm	375,5 mm	854 mm	750 mm	125 mm
GRM 500	20"	23"	28 3/4"	21 3/4"	18 1/8"	41 1/4"	37 3/8"	6"
	500 mm	585 mm	730 mm	552 mm	460 mm	1048 mm	950 mm	150 mm